



**LEADING THE WAY FOR INNOVATION & CREATIVITY**  
A Campaign for Our Future

# BUILDING THE BEST FOUNDATION IN THE REGION FOR OUR STUDENTS

Central High School remains one of the premier public college preparatory schools in the nation. It is widely recognized for **unparalleled academic excellence, a diverse and vibrant community, and an unwavering commitment to enrich the lives of our youth in the Philadelphia region.** A place where students develop critical thinking skills, a life-long passion for learning, and aspirations to innovate and mobilize transformational progress – **Central produces leaders.**

Annually, our graduating seniors collectively earn on average \$26 million in scholarships, prizes and awards – this includes **over 200 scholarships endowed by Central alumni** and presented at commencement. Central students participate and win a record-breaking number of awards each year in each field of study; notably in Science, Robotics, Mathematics, Music, Art, and Athletics.

Our school administration led by the 15th President, Katharine Davis (264), an alumna of our alma mater, along with the nearly 30,000 alumni around the world, parents, friends, and community partners all play a vital role in securing a sustainable future for Central High School students.

Philadelphia needs more of all that we foster—engaged students, invested faculty, integrative, experiential learning and academic excellence, dedication to community service, and social good.

## **We remain committed in our mission:**

- Invest in robust and inclusive academic and extracurricular programs to foster experiential ways of learning and career readiness
- Cultivate and maintain pride in our alma mater through continued alumni engagement
- Advocate the limitless possibilities that will sustain the foundational mission of Central

# 342

CHS students are in need of a place to study and collaborate outside of classroom at any given time





**95%**  
Esteemed faculty hold  
a Master's degree  
or higher

**5**  
World Languages are  
offered at Central  
High School - Chinese,  
French, Italian, Latin,  
& Spanish

**1**  
Central High School  
remains the only one  
high school in the U.S.  
to confer a Bachelor of  
Arts degree.

# THE DIVERSITY OF OUR STUDENT BODY IS A PRECIOUS ASSET

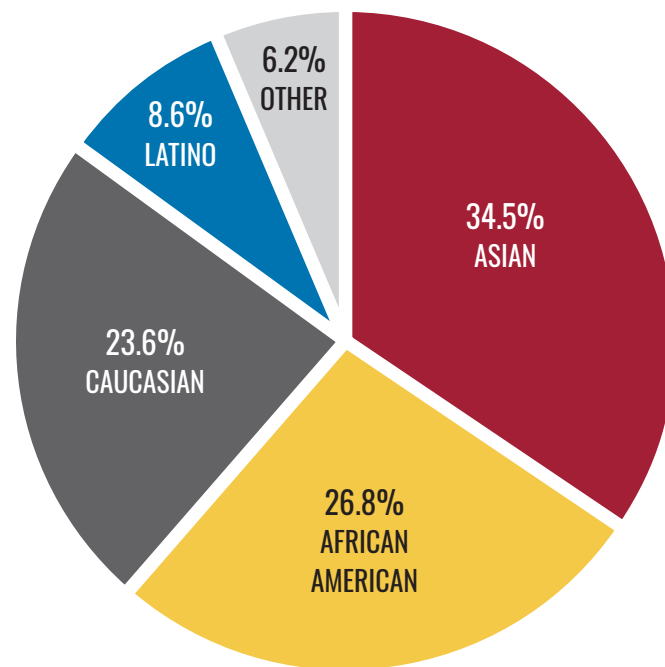
Our rich traditions fuel our desire to **preserve a cohesive, mutually supportive, academic community** – Central’s achievements are the collective dedication of our faculty, administrators, professional staff, and our students.

Central is committed to sustaining an environment free of harassment, bullying, and discrimination. It promotes a positive school culture that encourages interpersonal and intergroup respect among students and between students and staff, **leading the way for innovation and creativity to thrive.**

When we make an investment in **Central High School students, they emerge with the skills to enact change, take calculated risks, and lead purposeful lives of positive impact.**

Our pledge to economic inclusion and equitable engagement of all community members is essential to the fundamental purpose in making an impact, while broadening social and professional relationships among our alumni.

**The inclusion and engagement of all community members and key stakeholders is essential to our collective success and ever growing student body.** Let our alma mater reflect the community it serves through innovation and continuous improvement – **this starts with you** and a meaningful financial commitment to the capital campaign.





# CENTRAL HIGH SCHOOL THROUGH THE YEARS

Central High School — a public high school with limited city-wide funding and resources — was chartered on **June 13, 1836**. The second oldest public high school in the country, it was originally located in Center City Philadelphia across from City Hall at the site of the former Wanamaker Building, Central's first class included a mere 63 students.

In 1939, soon after the school celebrated its centennial, Central opened the doors to its fourth and current building— one of the last schools constructed in Philadelphia prior to the start of World War II.

The relocations were driven by pedagogical needs and buildings best suited to its expanding programs as well as student body: over the course of 187 years, **enrollment of students has grown to approximately 600 students per class.**

On any given day, there are nearly 2400 students, 150 faculty and professional staff who enter the crimson iron-clad doors into Central High School. However, enrollment and the **myriad of key stakeholders who walk the hallowed halls daily exceeds the current capacity in the historic building.**

1838

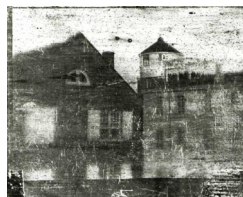


1900



1836

Central High School chartered by Philadelphia City Assembly



Central High School opened at corner of Juniper and Market St.

1854

Central High School relocated to the NE corner of Broad & Green Sts

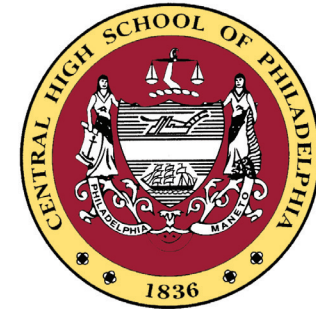
Central High School relocated across the street to the SW Corner of Broad & Green Sts

1939

Central High School relocated to its present home, corner of Olney & Ogontz Ave

# 80

Central's current building at nearly 80 years old is considerably past due for repair that will invigorate the campus and North Philadelphia corridor.



## CAMPUS REVIVALS

The following significant campus revivals are thanks to generous alumni like you:

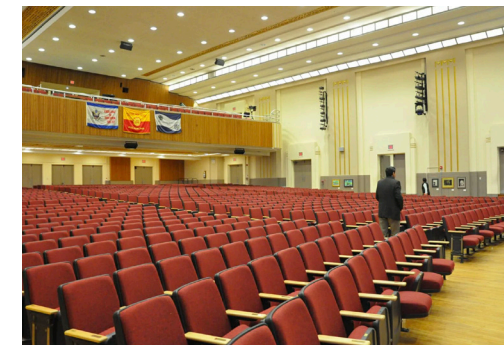
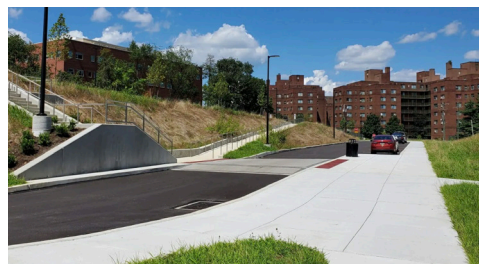
**1967** 4th Floor North Wing Addition

**1993** Gymnasium, Art & Science Addition

**2006** Barnwell Library Renovation

**2010** Auditorium Renovation

**2021** Parking Lot and campus Beautification Project






# FOR THE FUTURE GENERATIONS: INVESTING IN CENTRAL HIGH SCHOOL

Each alum has their own reasons – but all say that **attending Central High School shaped their life** more than any other place or event. Our ability to continue to provide an education that inspires future changemakers, engineers, artists, athletes, scholars and innovators converges with three major streams of operational excellences:

- 1** A vision for impact-driven initiatives to propel our mission for future generations to flourish.
- 2** A campus designed to maximize learning opportunities to reach higher and accomplish greater together.
- 3** A commitment of strong private funding sources that build upon the foundation of public resources and partnerships.

Gifts made by the generosity of alumni, friends, and community partners can repair and invigorate the campus, deliver competitive enrichment programs, advance the performing arts, provide 21st century learning opportunities, and strengthen pathways for Science, Technology, Engineering and Mathematics (STEM) education.

*Join us as we create a lasting legacy of excellence for Central High School students.*

An aerial photograph of the Central High School campus. The main building is a large, multi-story brick structure with a flat roof. To the left is a large, mostly empty parking lot. The campus is surrounded by green lawns and trees. In the background, other residential buildings and a city street are visible under a clear sky.

*“Central is the most significant institution that affected the course of my life.”*

*– Bernard G. Spain, 198*

*“In my 50 years working with the Alumni Association, I often hear members say ‘I have a deeper feeling for Central High than my college or graduate school.’ Now is the time to show your gratitude...”*

*– Chuck Steinberg, 221*



# LEADING THE WAY FOR INNOVATION AND CREATIVITY CAPITAL CAMPAIGN

The **world-renowned Music Department** at Central High School serves as a springboard for generations of internationally famed musicians, producers, and collaborators. Imagine what a **dedicated performance art center can do for our students, our community, our city.**

*Leading the Way for Innovation and Creativity Capital Campaign* supports our mission to provide a transformative educational experience for Central High School students, the North Philadelphia corridor, and our community at large.

## **REPAIR AND INVIGORATE THE CAMPUS**

Central's 25-acre campus and its 200,000 sf 1939 historic academic building is the 4th campus for Central since its founding in 1836. It's time to invest in our "Dear Old High" facilities and grounds, be stewards of our past, and continue and expand our legacy forward.

## **ACADEMIC PLANNING**

Comprehensive academic planning fits near term initiatives within the long term pedagogical vision for Central.

## **INTEGRATE STEM EDUCATION**

Building on the success and entrepreneurial spirit of Centrals' world championship robotics program, the new STEM Innovation Center will allow collaboration and project-based learning to take place across Science, Technology, Engineering and Math disciplines.

## **PROVIDE 21ST CENTURY LEARNING OPPORTUNITIES**

Many of our top performing students need access to computers and new technology that are necessary in today's learning environments. The new Digital Media and Technology Center housed in the new Student Commons, will provide technology for classroom research and writing projects, podcasts, and broadcasting.

## **ADVANCE THE PERFORMING ARTS**

The arts are flourishing at Central High School, with 41% of students participating in music, theatre, dance and visual arts through coursework, ensembles and extracurricular clubs. Purpose-built space for the arts will illustrate our belief that arts education is an integral pedagogical component that is proven to foster high academic achievements.



### Performing Arts Center

\$32 Million



### STEM Innovation Center

\$3.1 Million



### Site Development & Loading

\$8.1 Million



### Student Commons - 2nd Floor (Study and Collaboration Suite)

\$1.3 Million



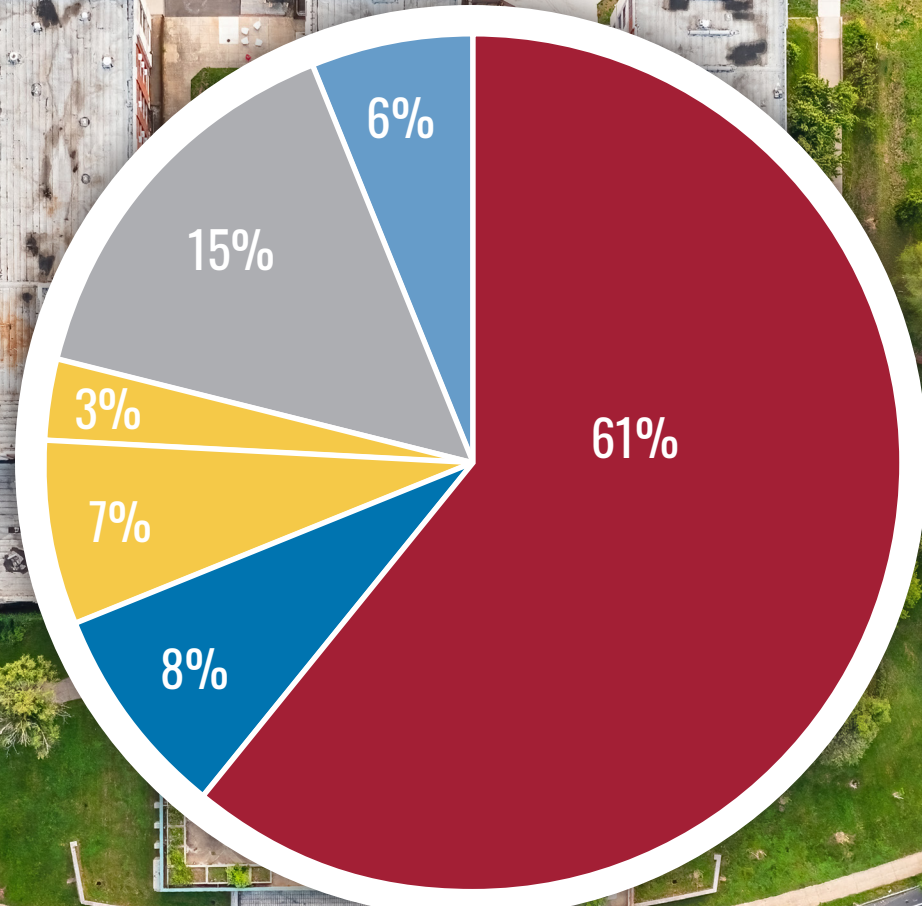
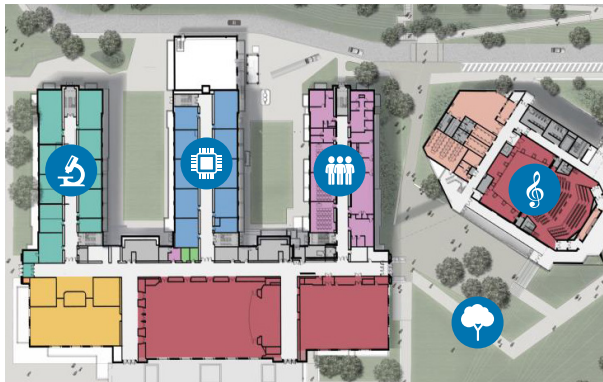
### Student Commons - 1nd Floor (Multipurpose Room & Entry)

\$3.8 Million



### Digital Media & Technology Center

\$4.4 Million





# PROPELLING CENTRAL HIGH SCHOOL NOW AND INTO THE FUTURE

Investing now in this expansion will provide collaborative and state-of-the-art spaces to propel Central High School now and into the future for sustainable, and measurable success. Phase I has been already achieved, but we are asking to donations to complete Phase II and Phase III.

**Phase I Site Improvements:** \$8.1M - Goal Achieved! Thank you to all who helped us pave the way.

**Phase II Performing Arts Center:** \$36M - \$26M Received from public and private contributions.

**Phase III STEM Innovation Wing, Multi-Level Student Commons, Digital & Media Technology Lab**



LOBBY AND DONOR SIGNAGE



THE BRIDGE



DIGITAL & MEDIA TECHNOLOGY LAB



CAMPUS / PLAZA / BRIDGE

“Central had a particular role in my overall life path; less that Central molded me into a world class scientist, but more so provided and fostered an environment to explore a vast variety of interests and excel in whatever one chose to do.”

– Kerstin Perez, 192  
Associate Professor of Particle Physics  
at MIT and NASA Scholar

## NAMING DEDICATION OPPORTUNITIES

Performing Arts Theater	\$5,000,000	Costume Shop	\$250,000
Theater Stage	\$3,500,000	Dressing Room, W	\$250,000
Theater Lobby	\$3,000,000	Dressing Room, M	\$250,000
Plaza Bridge	\$2,500,000	Stage Office	\$150,000
Plaza Art Gallery	\$2,000,000	Music Office 1	\$100,000
Grand Outdoor Plaza	\$2,000,000	Music Office 2	\$100,000
Plaza Entrance to Theater	\$1,500,000	Practice Studios	\$75,000
Theater Scene Shop	\$1,500,000	Theater Restroom(s)	\$75,000
Music Technology Lab	\$1,500,000	Audience Chair (loose)	\$10,000
Music Rehearsal Hall	\$1,000,000	House Seating (adjustable)	\$5,000
Technical Catwalk	\$1,000,000	Balcony First Tier Seats	\$2,500
Ensemble Studio	\$500,000	Balcony Second Tier Seats	\$2,500
Control Room	\$250,000		





# ELEVATE THE CENTRAL HIGH EXPERIENCE FOR ALL

At the heart of the Central experience is our educators. Qualified, compassionate, well-rounded teachers and professional staff – who inspire our students to unlock their potential and reach beyond their grasp – are the bedrock of contributory success of our alumni in their respective fields of work.

The **generous, philanthropic contributions from our alumni, friends, and stakeholders** elevate these educators in providing a world-class curriculum as well as extracurricular programs that complement the academic offerings for Central High School students.

Every gift helps educators cultivate a student's interests; a chance to maximize one's contribution to society and advance our shared mission and goals to provide our students access to create a comprehensive educational program.

*“Central High School has had a profound influence on me from my very first day of attendance. It’s one of the greatest thrills of my life to be able to contribute to Central.”*

*– Joseph Field, 192*

For more information please contact us:  
The Associated Alumni of  
Central High School  
P.O. Box 26580  
Philadelphia, PA 19141-6580  
Office: (215) 845-3308

Cynthia Lech, Executive Director  
O: (215) 845-3308  
M: (215) 821-9886  
Email: [cynthia@centralhighalumni.org](mailto:cynthia@centralhighalumni.org)

The AACHS is a non-profit 501(c)3  
organization. Donations are tax  
deductible to the full extent allowed by  
the law. Federal Tax ID 23-1618008.



Our students, our community,  
and our city rely on generous  
contributions from our alumni,  
friends, and stakeholders to unlock  
learning potential opportunities —  
and the Leading the Way Capital  
Campaign **holds the key.**



Scan to learn more about how  
The Capital Campaign will impact  
generations of Central students.  
For more information on donating,  
visit: [centralhighalumni.com/LTW](http://centralhighalumni.com/LTW)